

Description

Relay hold down springs/ejectors

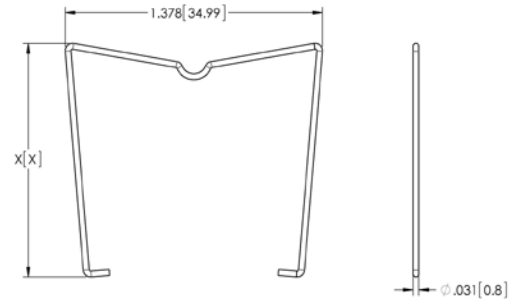
Construction

MH series stainless steel

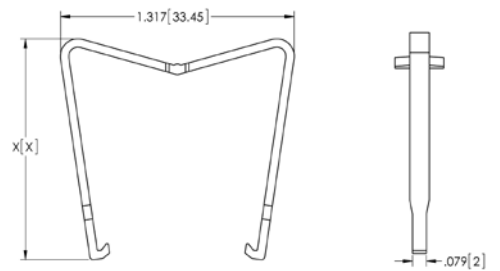
MP, MS series break resistant thermoplastic

Agency Approvals • ROHS

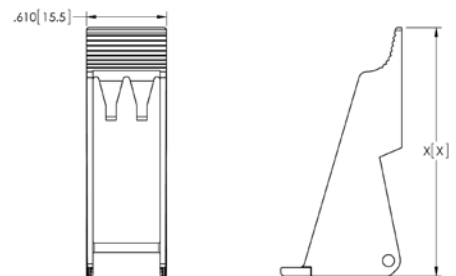
Part #	Description	Dimensions X in. (mm)
MH12-2	For EC series, 12mm high relays	.742 (18.85)
MH16-2	For EC series, 16mm high relays	.852 (21.66)
MH25-2	For EC series, 25mm high relays	1.247 (31.66)



Part #	Description	Dimensions X in. (mm)
MP12-2	For EC series, 12mm high relays	.787 (19.99)
MP16-2	For EC series, 16mm high relays	.897 (22.79)
MP-25-2	For EC series, 25mm high relays	1.245 (31.63)



Part #	Description	Dimensions X in. (mm)
MS12	For ES35, ES50, ES50/3, 12mm high relays	1.381 (35.08)
MS16	For ES35, ES50, ES50/3, 16mm high relays	1.525 (38.74)
MS25	For ES35, ES50, ES50/3, 25mm high relays	1.89 (48)



Part #	Description	Dimensions X in. (mm)
MS35	For ES15/2N, 3N, ES15/4B, 4N, 4S	2.323 (59)

