

## Description

Steel DIN Rails

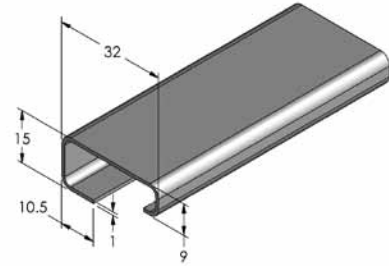
## Construction

Roll Formed Steel, Galvanic Zinc Plating and Passivation

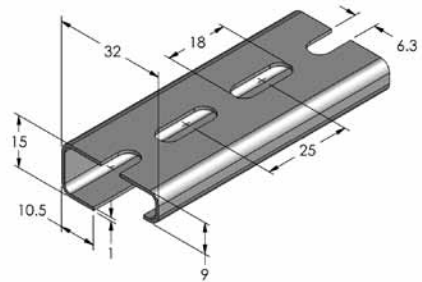
**Agency Approvals**

- European Standard EN 60715
- ROHS

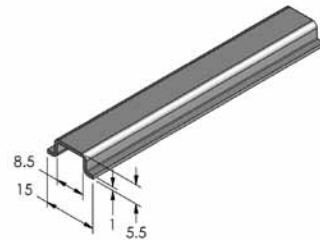
Part #	Description
C-109-2M	Unpunched 2 Meter



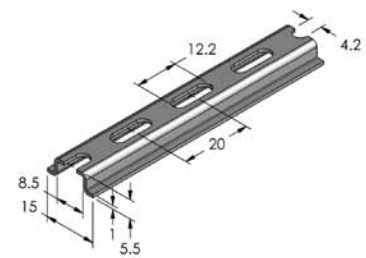
Part #	Description
C-109-2PM	Prepunched 2 Meter



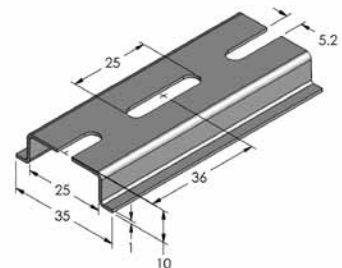
Part #	Description
C-110-2M	Unpunched 2 Meter



Part #	Description
C-110-2PM	Prepunched 2 Meter



Part #	Description
C-111-2PM-B	Prepunched 2 Meter



Rails may be supplied precut in standard lengths or to customer specifications. Please consult factory.