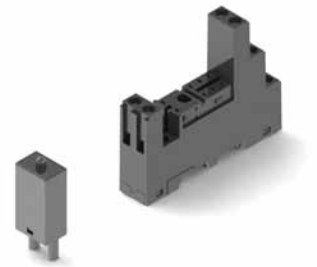


# ES Series Relay Sockets

- Description** 8 Pin Slim Line Sockets, DIN Rail Mountable, Finger Safe
- Electrical Rating**
- 300 Volts, 10 Amps 
  - 300 Volts, 12 Amps 
- Construction**
- Contacts** • Brass, Nickel Plated
  - Screws** • M3 Steel, Nickel Plated, Maximum Wire Gauge #14
  - Molding** • Break Resistant Thermoplastic
- Agency Approvals**
- UL recognized, File No. E113714 
  - CSA certified, File No. LR42742 
  - CE 



## ES Series Ordering Code

Part #	Description	Terminal Type
ES50/3	DPDT, 8 Pin Slim Line	Box Lug

## Accessories

Part #	Description
(Refer to the accessories pages 24-31)	
C-103-PM	Prepunched Aluminum DIN Rail (1 Meter Lengths)
C-108-PM	Prepunched Raised Aluminum DIN Rail (1 Meter Lengths)
C-108-2PM	Prepunched Raised Aluminum DIN Rail (2 Meter Lengths)
MS12	Hold Down Spring/Ejector
MS16	Hold Down Spring/Ejector
MS25	Hold Down Spring/Ejector

## Plug-in Indicator and Protection Modules

Part #	Description
Type 22	Diode for 6-230V DC (+Terminal A1)
Type 42V	Green LED with Diode for 6-24V DC (+Terminal A1)
Type 42CV	Green LED with Diode for 110-230V DC (+Terminal A1)
Type 52B	RC Circuit for 6-24V AC
Type 52C	RC Circuit for 110-240V AC
Type 62V	Green LED for 6-24V AC/DC (For DC + Terminal A1)
Type 92V	Green LED for 110-240V AC/DC (For DC + Terminal A1)
Type 62CV	Varistor + Green LED for 6-24V AC/DC (For DC + Terminal A1)
Type 92CV	Varistor + Green LED for 110-240V AC/DC (For DC + Terminal A1)
Type 102	Bypass Resistor 110-240V AC

