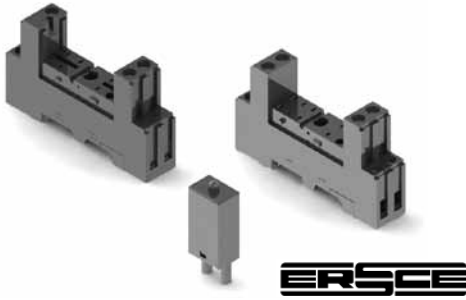


Relay Sockets

ES Series



ES Series Ordering Code

| Part # | Description | Terminal Type |
|--------|--------------------------------|---------------|
| ES35 | SPDT, 5 Pin Slim Line (Fig. 1) | Box Lug |
| ES50 | DPDT, 8 Pin Slim Line (Fig.2) | Box Lug |

Accessories

| Part # | Description |
|--|---|
| (Refer to the accessories pages 24-31) | |
| C-103-PM | Prepunched Aluminum DIN Rail (1 Meter Lengths) |
| C-108-PM | Prepunched Raised Aluminum DIN Rail (1 Meter Lengths) |
| C-108-2PM | Prepunched Raised Aluminum DIN Rail (2 Meter Lengths) |
| MS12 | Hold Down Spring/Ejector |
| MS16 | Hold Down Spring/Ejector |
| MS25 | Hold Down Spring/Ejector |

Description

5 and 8 Pin Slim Line Sockets, DIN Rail Mountable, Finger Safe

Electrical Rating

• 300 Volts, 10 Amps 300 Volts, 12 Amps

Construction

Contacts • Brass, Nickel Plated
Screws • M3 Steel, Nickel Plated,
 Maximum Wire Gauge #14

Molding • Break Resistant Thermoplastic

Agency Approvals • UL recognized, File No. E113714

• CSA certified, File No. 172852
 • CE

Plug-in Indicator and Protection Modules

| Part # | Description |
|-----------|--|
| Type 22 | Diode for 6-230V DC (+Terminal A1) |
| Type 42V | Green LED with Diode for 6-24V DC (+Terminal A1) |
| Type 42CV | Green LED with Diode for 110-230V DC (+Terminal A1) |
| Type 52B | RC Circuit for 6-24V AC |
| Type 52C | RC Circuit for 110-240V AC |
| Type 62V | Green LED for 6-24V AC/DC (For DC + Terminal A1) |
| Type 92V | Green LED for 110-240V AC/DC (For DC + Terminal A1) |
| Type 62CV | Varistor + Green LED for 6-24V AC/DC (For DC + Terminal A1) |
| Type 92CV | Varistor + Green LED for 110-240V AC/DC (For DC + Terminal A1) |
| Type 102 | Bypass Resistor 110-240V AC |

TERMINAL LOCATIONS

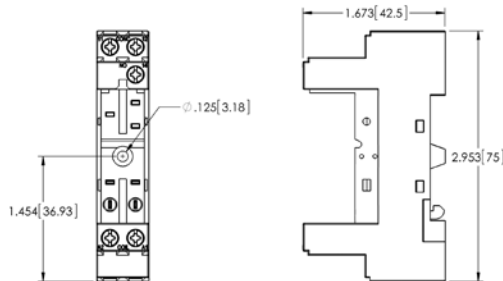


Figure 1

TERMINAL LOCATIONS

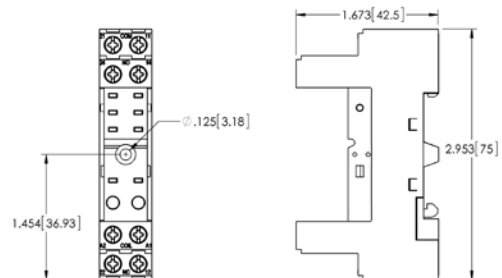


Figure 2